

92mm sq.

San Ace 92W

25mm thick (9WL type)
 25mm thick (9WS type)
 25mm thick (9WP type)
 38mm thick (9WV type)



General Specifications

- Material Frame: Plastics (Flammability: UL94V-0),
 Impeller: Plastics (Flammability: UL94V-1)
- Expected Life Refer to specifications (Indoor, L10: Survival rate: 90% at 60°C ,
 rated voltage, and continuously run in a free air state)
- Lead Wire ⊕red ⊖black (Sensor) yellow (Control) brown
- Storage Temperature -30°C to +70°C (Non-condensing)

92×92×38mm (Mass : 265g) **IP 68** **9WV**type

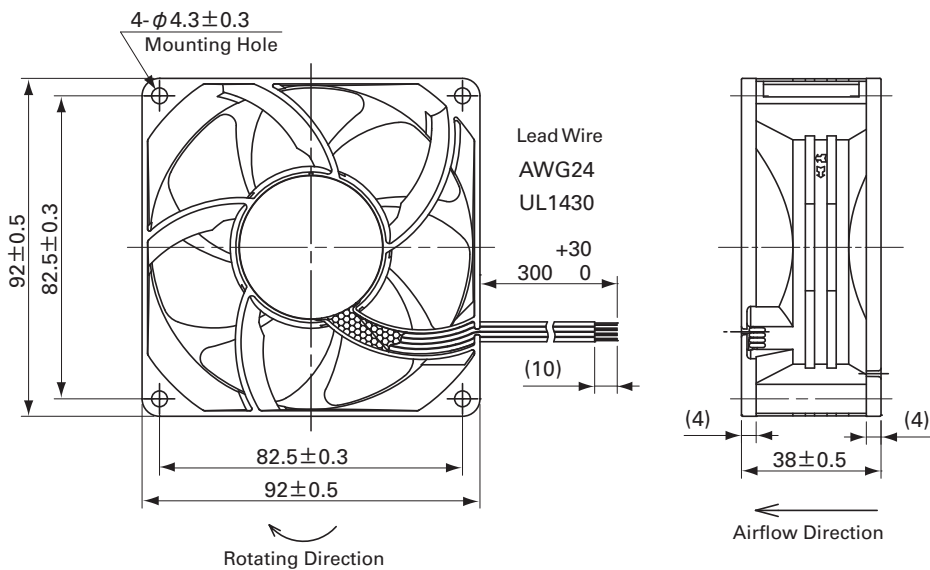
Specifications

The following nos. **have PWM controls, pulse sensors, and ribs.**

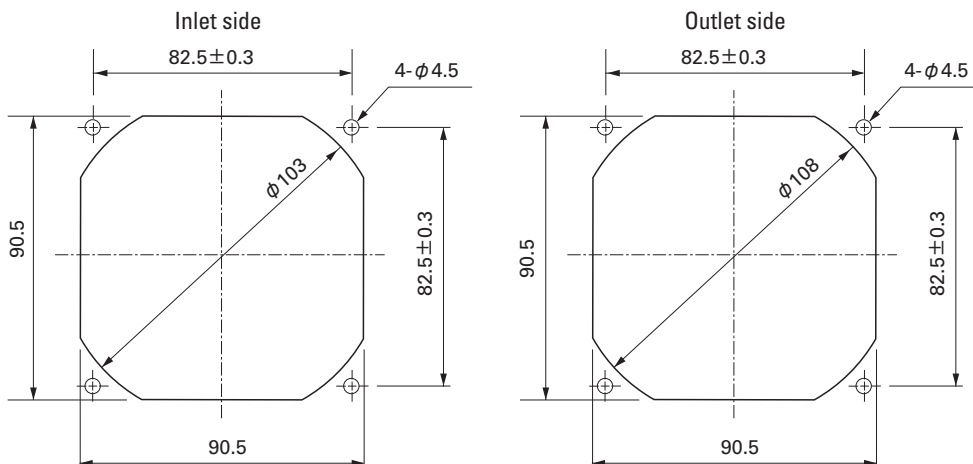
Model No.	Rated Voltage [V]	Operating Voltage Range [V]	PWM duty cycle* [%]	Rated Current [A]	Rated Input [W]	Rated Speed [min ⁻¹]	Max. Airflow [m ³ /min] [CFM]	Max. Static Pressure [Pa] [inchH ₂ O]	SPL [dB(A)]	Operating Temperature [°C]	Expected Life [h]
9WV0948P1H001	48	40.8 to 52.8	100 0	0.82 0.14	39.4 6.7	8,500 4,000	5.05 178 2.37 83.7	385 1.55 85.2 0.34	64 45	-20 to +70	30,000

*PWM Frequency : 25kHz

Dimensions (unit : mm)



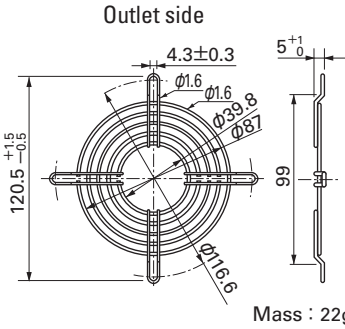
Reference Dimension of Mounting Holes and Vent Opening (unit : mm)



Options (unit : mm)

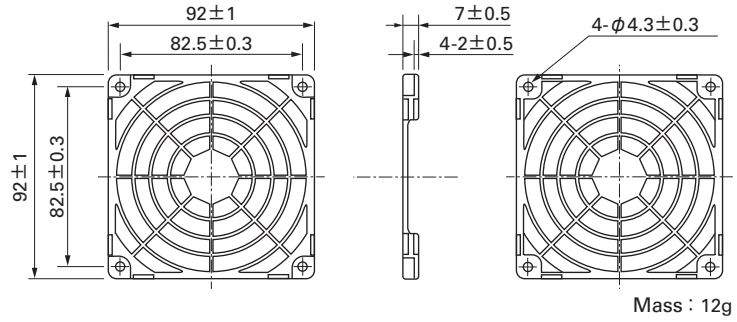
Finger Guards

Model : 109-099C Surface treatment : Nickel-chrome plating (silver) Color : Nickel-chrome plating (silver)



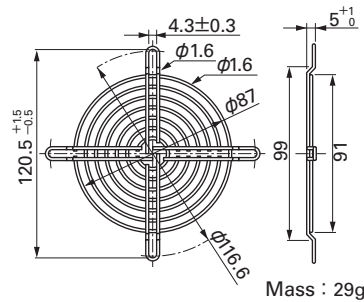
Resin Finger Guards

Model : 109-1001G



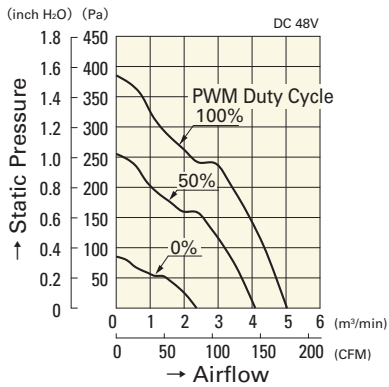
Model : 109-099E Surface treatment : Nickel-chrome plating (silver) Color : Nickel-chrome plating (silver)
 : 109-099H : Cation electropainting (black)

Inlet side, Outlet side



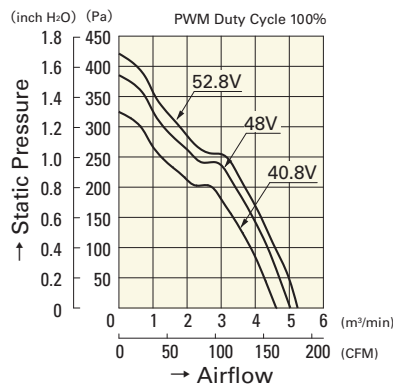
Airflow - Static Pressure Characteristics

PWM Duty Cycle



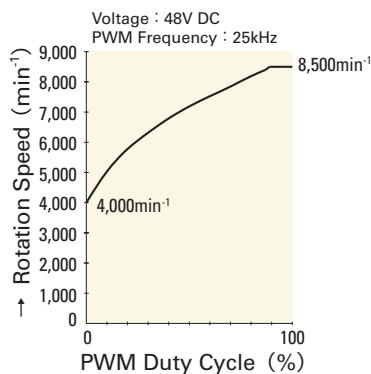
9WV0948P1H001

Operating Voltage Range



9WV0948P1H001

PWM Duty - Speed Characteristics Example



9WV0948P1H001